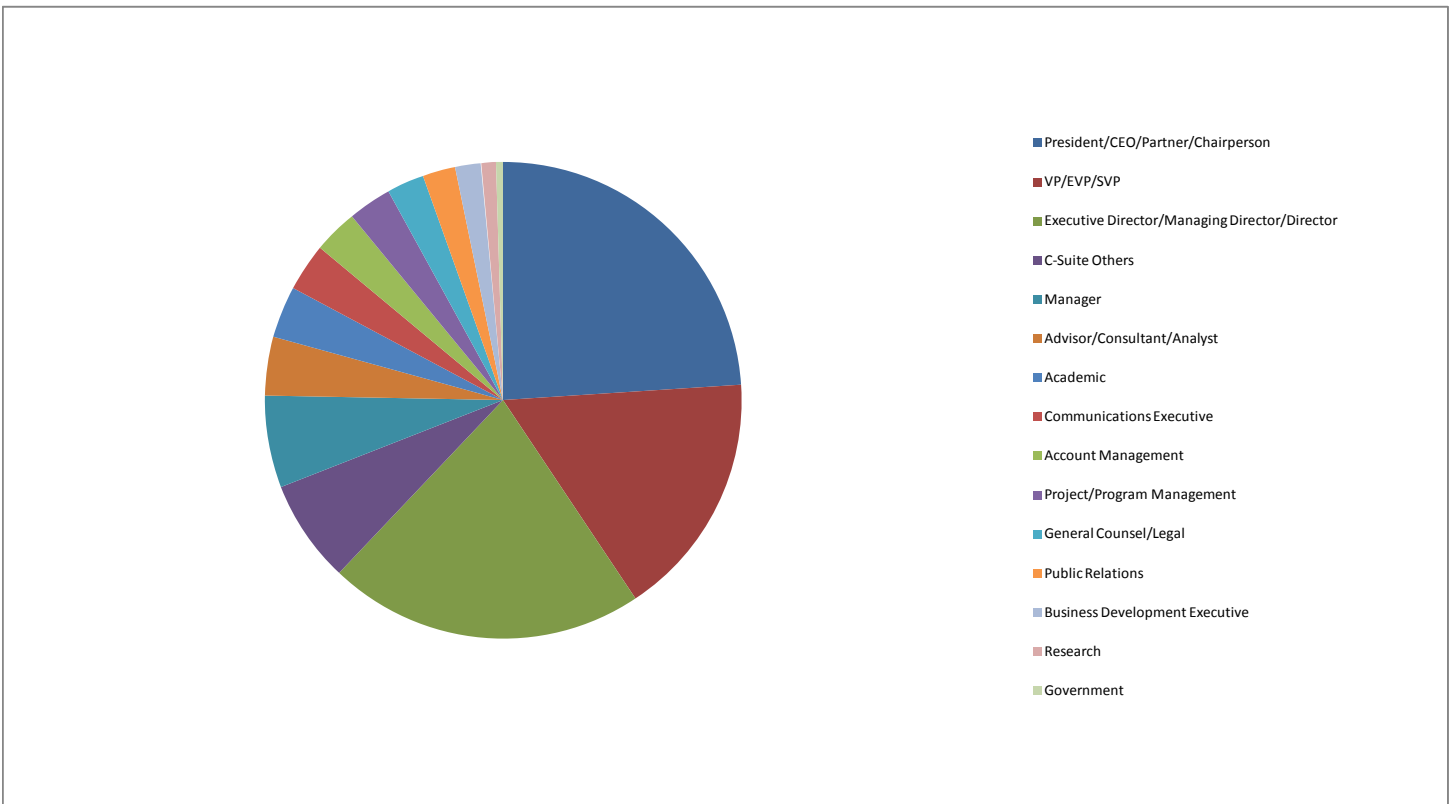


**2/3 of our attendees are senior-level Executives leading the company's Corporate Responsibility's efforts**

President/CEO/Partner/Chairperson	<b>24%</b>
VP/EVP/SVP	<b>17%</b>
Executive Director/Managing Director/Director	<b>21%</b>
C-Suite Others	<b>3%</b>
Manager	7%
Advisor/Consultant/Analyst	6%
Academic	4%
Communications Executive	3%
Account Management	3%
Project/Program Management	3%
General Counsel/Legal	2%
Public Relations	2%
Business Development Executive	2%
Research	1%
Government	1%

Senior Partner





**Sample titles from our 2008 CRO Summits**

<b>Job Title</b>	<b>Company</b>
Editor	"Accountability Central"
VicePresident	32 Degrees
Sr. Manager, Business Development	3Degrees
President	A.H.F.
Analyst - Sustainability Specialist -Analyst	AberdeenGroup
CEO	ABO Group
Senior Manager	Accenture
Consultant	Acre Resources
CEO	Acre Resources
Principal	Adam Zak Executive Search
	Addison
CSR Intern	Adobe Systems Incorporated
Director of Strategic Development	AECOM
Director of Research & Operations	Albert Shanker Institute
VP Sustainability & Alliance Partnerships	Allsteel Inc
President, CEO Alonovo, LLC	Alonovo
	Alternative Channel
Consultant	Ambassador Organics
Business Adviser	American Chamber of Commerce
VP	American Express
	American Heritage Rivers Alliance
SVP Forums	AMR Research
Director	AMR Research
Consultant	Amy Smith Consulting
VP & GM, Solar Business Group	Applied Materials
Sustainability Consultant	Appreciate Inquiry Consulting
Office Manager	Aradiant
CEO	Aravo
Research Director	As You Sow
Assoc. Dir, CSR Program	As You Sow
Senior Program Associate	Aspen Institute Center for Business Education
Attorney	Association of Corporate Counsel
President & CEO	Association of Management Consulting Firms
Director of Programs	Association of Management Consulting Firms
Director, Corporate Responsibility	Avon Products, Inc.
	Azul Partners/Aravo Solutions
President	B & B Pool and Spa Center
Murata Prof. of Business Ethics	Babson College
	Bauser Media Group
Assistant Account Executive	BBMG
Account Director/Sr. Brand Strategist	BBMG
	Bloomberg, L.P./ers
Director	B-M
President	BorgWarner
Research Associate	Boston College Center for CC
Communications Director	Boston College Center for Corporate Citizenship
Account Director	Brunswick Group
Associate	Brunswick Group LLC
	Brunswick Group LLC
eCommunications Manager	BSR
	Burson-Marsteller
Communications Manager	Business for Social Responsibility
Communications Coordinator	Business for Social Responsibility
Communications Associate	Business for Social Responsibility
Executive Director	Business Roundtable Institute for Corporate Ethics
Associate Director	Business Roundtable Institute for Corporate Ethics



**Job Title**

Corporate Development Officer  
Development Associate  
Corporate Responsibility Advisor  
Business Development Manager  
Director, Business Development  
Vice-President  
Attorney  
VP  
Partner  
CEO  
Executive Director  
Director of Sustainable Energy Initiatives  
Executive Director  
Deputy Director  
President  
CEO  
Director, Strategy & Competitive Development  
Account Manager  
VP of Development  
MBA Candidate 2009  
President  
President  
Director  
Senior Manager  
Financial Advisor  
Analyst  
Fire Deputy Commissioner  
Environment Commissioner  
VP, Corp. Comm. & IR  
Sr. Director  
Director of Information Management  
  
Sr Field Producer, Sr Booker  
CEO  
PhD Professor  
Senior Vice President Sales and Marketing  
  
Consultant  
Executive VP  
Managing Editor  
Assistant Director  
Director  
Assistant General Counsel  
President  
President  
  
Principal  
VP Business Development  
RVP  
Account Executive  
Regional Manager  
AHRA navigator

**Company**

Business Wire  
CAFAmerica  
Camp Discovery  
Candela Solutions, LLC  
Candela Solutions, LLC  
Capitol Advantage  
Cardinal Health  
Catherine M. Lyczko, Attorney-at-law  
Catholic Healthcare West  
Celery Design Collaborative  
Center for Corporate Sustainability  
Center for Resource Solutions  
Center for Resource Solutions  
Center for Social Impact Communication, Georgetown University  
Center for Social Impact Communication, Georgetown University  
Century 21 Country Bumpkin  
ChainLink Research  
Charles Schwab  
Charleston|Orwig  
Chicago Climate Exchange  
Chicago GSB  
Chief Inspired Protagonist  
Chiera & Associates  
Chubb Group of Insurance Companies  
Cisco Systems  
Citi Smith Barney  
Citigroup  
City of Chicago  
City of Chicago  
Claire's Stores, Inc.  
CleanSource Power  
Clear Carbon Consulting  
ClearBridge Advisors  
CNBC  
Collective Strength  
Columbia University  
Community Media NYC  
Cone  
Conservation Services Group  
Corporate Realty & Management Institute  
Corporate Responsibility Institute  
Corporate Sustainability Alliance  
Corrections Corp of America  
Corrections Corp of America  
Creative Insights  
Creative Leaps International  
CSANow.org  
CSCC  
CSR Consulting and Recruiting  
Curran & Connors  
Curran & Connors  
Curran & Connors  
Curran & Connors, Inc.  
CUYAHOGA River Remedial Action Plan



**Job Title**

Director, Sustainable Business  
 TBD  
 Dep CEO  
 CFA  
 Education Partnerships Manager  
 Sponsorships  
 Manager, Sponsorships  
 Senior Vice President  
 Internal Communications Manager  
 Copywriter  
 Business Development Manager  
 VP Sustainability  
 President  
 Director, Sustainability  
 Counsel  
 Asst Brand Manager  
 President  
 Industry Relations Manager Corporate Solutions  
 Creative Segment Manager US & Canada  
 Communications Director  
 VP EHS  
 Managing Director  
 Director of Community & Public Relations  
 AVP Industry Relations  
 Sustainability Strategy Consultant  
  
 Redevelopment Planner  
 Director Corporate Sustainability  
 Director, Community Programs  
 COO  
 Principal  
 Executive Director  
 Chief Marketing Officer  
 CEO  
 Chief Knowledge Officer  
 CR Integration Leader  
 Director of Americas Public Relations  
 CEO  
 Associate  
  
 Director  
 Founder  
 Author  
 Senior Vice President, General Counsel  
 Business Strategy Analyst  
 Director Product Development  
 Senior Associate  
 CEO  
 President  
 Vice President  
 Executive Director  
 Program Manager  
 President  
 MBA '08  
 Analyst  
 VP Corp Comm

**Company**

Dell  
 Deloitte  
 Deloitte  
 Deutsche Bank Securities Inc.  
 Discovery Communications  
 Discovery Education  
 Discovery Education  
 DKC  
 DLA Piper  
 Domini Social Investments  
 Domtar  
 Domtar Paper  
 Dry Green Supply LLC  
 Duke Energy  
 DuPont  
 Dyson B2B, Inc.  
 Earth Now  
 Eastman Kodak Company  
 Eastman Kodak Company  
 Eaton Corp.  
 Eaton Corporation  
 Eco Squared Consulting  
 Ecolab  
 Ecolab  
 Ecommitment  
 Elizabeth Wall Partners  
 Elkhart County Government  
 Enterprise Rent-A-Car  
 Entrepreneurs Foundation  
 ENTRIX  
 ENVIRON International Corporation  
 Environmental Law Policy Center  
 eEquilibrium  
 eEquilibrium  
 eEquilibrium Solutions Corporation  
 Ernst & Young  
 Ernst & Young, LLP  
 ERS Global  
 ERS Global  
 Euromoney Institutional Investor LLC  
 Evergreen Sustainability Solutions  
 Excellent Packaging & Supply  
 Extraordinary Circumstances  
 Fairchild Semiconductor  
 FedEx Corp  
 Fellowes, Inc.  
 First Environment Inc  
 First Renaissance Ventures  
 FirstFuelCells.com  
 Fluor Corporation  
 Fluor Corporation  
 Foresight Design  
 ForestEthics  
 Fox Net Impact  
 Framework:CR  
 Franklin Templeton Investments



**Job Title**

Manager, Corporate Citizenship  
 Consultant  
 Ass. General Counsel  
 Human Resources Director  
 Sr. Vendor Compliance Officer  
 VP of Monitoring and Vendor Development  
 VP of Sales  
 Program Director  
 Owner  
 Senior Director, Major Accounts  
 Program Officer  
 Director of Philanthropy  
 SVP Business Development  
 Founder and CEO  
 Executive Director  
 Chair  
 Editor  
 Vice President  
 EVP  
 Sr. Vice President  
 Director  
 principal  
 Principal - Business Advisory Services  
 PR Specialist  
 Partner  
 Executive Director-BAS  
 Business Development Executive  
 Chairperson  
 Faculty Director  
 Professor and Greehey Endowed Chair  
 Vice President, GreenBiz Intelligence  
  
 SVP, National Director of Facility Resources Group  
 EVP, Managing Dir.  
 Student  
 Adjunct Professor  
 Partner - Global Supply Chain & Transportation Practice  
 CEO  
  
 Executive Vice President  
 Associate  
  
 Partner  
 Executive Director  
 Managing Director, Global Head of eEquities  
 President  
 Executive Director  
 Director  
 Public Relations  
 CEO & President  
 Membership Director  
 Executive Director  
 Vice President of Business Development  
 SVP Client Services  
 President  
 Co-CEO

**Company**

Franklin Templeton Investments  
 Free Agent  
 Freeport-McMoRan Copper & Gold Inc.  
 Gaiaam  
 Gap Inc., Department of Social Responsibility  
 GAP, Inc.  
 General Electric Company  
 Georgetown University MPS Corporate Communications  
 GGS, LLC  
 Gifts In Kind International  
 Give2Asia  
 Give2Asia  
 Giving Tree, LLC  
 Giving Tree, LLC  
 Global Health & Safety Initiative  
 Global Sourcing Council  
 GoGreenOnline  
 Goldman, Sachs & Co.  
 Golin Harris  
 GolinHarris  
 Good Housekeeping Research Institute/ERS  
 grant thornton  
 Grant Thornton LLP  
 Grant Thornton LLP  
 Grant Thornton LLP  
 Grant Thornton LLP  
 Grant Thornton LLP  
 Grant Thornton LLP  
 GRC (SOX) Institute  
 Great Lakes Insitute for Energy Innovation  
 Greehey School of Business, St. Mary's University  
 Greener World Media  
 GreenMatter  
 Grubb & Ellis  
 Grubb & Ellis Company  
 Haas School of Berkeley, UC Berkeley  
 Harvard University  
 Heidrick & Struggles  
 Heller Communication Design  
 Hidary Foundation  
 HIP Investor  
 HIP Investor  
 Hitachi Consulting  
 Hogan & Hartson  
 HROAssociation.org  
 HSBC Bank plc  
 Hudson River Navigator  
 Hudson/Fulton/Champlain Quadricentennial  
 Huron Consulting Group  
 HydroPoint  
 HydroPoint Data Systems  
 ICNC  
 ICNC  
 ICR  
 ICR, Inc.  
 ICR, Inc.  
 ICR, Inc.



**Job Title**

Manager Regulatory Services  
General Manager  
Consultant  
Executive Vice President  
Manager, Operations & Engineering  
Director, Corporate Responsibility  
Technical Assistant  
CSR Communications Manager  
CAO  
Director of Marketing, Eco-Technology  
Director  
Chairman  
Chief Executive Officer  
Director  
CEO  
Vice President, Investor Relations  
Executive Team  
Executive Director  
Research Director  
CEO  
President  
Vice President, Higher Education Production/Manufacturing  
Corporate Communications Director  
Vice President, Investor Relations  
Practice Support Attorney  
Managing Director  
Strategy Planning Design  
National Media Public Relations Specialist  
National Director, Community Relations  
Director  
CSR Intern  
Assistant Professor

Managing Director  
Chief Marketing Officer  
Publisher  
Partner  
Principal/Consultant  
CEO  
Sr. Acct. Director  
Partner  
General Counsel  
Professor  
VP  
Vice President, CSR  
Dir Global Social Responsibility & Knowledge Sharing  
Director, Corporate Social Responsibility  
Senior Vice President  
President  
Marketing Service Manager  
President  
Director, Worldwide Corporate Responsibility  
CEO  
IT Manager  
Principal  
Director, Compliance Programs

**Company**

IHS, Inc.  
In Transition  
Independent  
Industrial Supply Association  
Ingram Marine Group  
Intel  
Intel Corp.  
Intel Corp.  
Intel Corp.  
Intel Corporation  
Interagency Task Force on American Heritage Rivers  
Interface Inc.  
International Center for Good Business  
International Center of Good Business  
International Center of Good Business  
International Rectifier  
International Society of Sustainability Professionals  
International Society of Sustainability Professionals  
IW Financial  
IW Financial  
J. Robert Folchetti Associates  
John Wiley & Sons, Inc.  
John Wiley & Sons, Inc.  
Johnson & Johnson  
Johnson & Johnson  
Jones Lang Lasalle  
Kaiser Permanente  
Kaiser Permanente  
Kaiser Permanente  
Kaiser Permanente  
Kaiser Permanente  
Kaiser Permanente  
Kean University  
Ketchum  
Khloro Capital Management  
Kodak GC  
Kyoto Planet  
Lantern Partners  
LeanGreenConsult.com  
Legal Research Center Inc.  
Live Marketing  
Logos Consulting Group  
LOJS  
Lorain County Community College  
Manning, Selvage & Lee  
Manning, Selvage & Lee  
Manpower  
Marathon Oil Company  
Marketing Works  
Marketing Works  
Marketing Works  
Mastodon Consulting  
McAfee, Inc.  
McManco  
McMaster-Carr Supply Company  
MDS Group LLC  
MeadWestvaco Consumer & Office Products



**Job Title**

Consultant  
 Managing Director  
 Emerging Market and Sustainable Development strategy  
 Business Development  
 Senior Vice President, Sales Corporate Accounts & International Sales  
 Business Development Manager  
 Director, Office of Sustainability and Stewardship  
 Account Supervisor  
  
 Executive Director  
 Partner, SVP Corporate Responsibility  
 Chief Compliance Officer  
 President & CEO  
 Chair, LM-A&WMA  
 Co-Director  
 National Accounts Manager  
 Product Manager  
 Strategic Projects Manager  
 Senior Manager, Corporate & Donor Relations  
 Program Associate for Chapters  
 Membership / Executive Assistant  
 Chief Operating Officer  
 President  
 Community Relations Manager  
  
 Account Executive - Aadvertising  
 President  
  
 President  
 Executive Director, Corp Comm  
 Sustainability Director  
 Editor  
 COO  
 Associate Professor  
  
 Chief Sustainability Officer  
 Corporate Philanthropy Editor  
 President/CEO  
 Executive VP, Development & Operations  
 PR  
 VP, Civic Partnership & Community Initiatives  
 Publishing Director  
 President  
 Client Services  
 Vice President Technology & Innovation  
 Manager of Institutional Services  
 Governance & Risk Mgmt Consultant  
 Enterprise Risk Management Consultant  
 MBA student  
 Vice President, Public Relations  
 Manager, Sustainability  
 Director, Strategic Partnership  
 Manager Federal Environment  
 Director of Corporate Social Responsibility  
 Chief Communications Officer  
 President

**Company**

Meier-Phelps Consulting  
 Mesirow Financial  
 Michigan State University  
 MicroEdge  
 Mohawk Fine Papers Inc.  
 Mohawk Fine Papers Inc.  
 Motorola  
 Mullen/REI  
 National Association of Manufacturers  
 National Foundation for Teaching Entrepreneurship  
 NATIONAL Public Relations  
 Natsource, LLC  
 Natural Logic, Inc.  
 Navistar  
 NBIS  
 Neenah Paper  
 Neenah Paper, Inc.  
 Net Impact  
 Net Impact  
 Net Impact  
 Net Impact  
 Net Impact  
 Net Impact NY Prof Chapter  
 NetApp  
 NetImpact  
 New Jersey Media Group  
 New Story LLC  
 New York State Society of CPAs/The Trusted Professional  
 Norki Energy Systems  
 Novartis Corporation  
 NPTA Alliance  
 NPTA Alliance  
 NPTA Alliance  
 NYU/Wagner  
 Oce-USA Holding, Inc.  
 Office Depot  
 onPhilanthropy  
 onShore Networks  
 Open Compliance & Ethics Group  
 OutCast Communications  
 Pacific Gas & Electric Company  
 Packaging Strategies  
 Pangaeiagroup  
 Papilia  
 Parker Hannifin Corporation  
 Parnassus Investments  
 Peggy Betchley Consulting  
 Peggy Betchley Consulting  
 Pepperdine University, CA  
 PepsiCo  
 PepsiCo, Inc.  
 Pfizer Inc  
 PGE Corporation  
 Pillsbury Winthrop Shaw Pittman LLP  
 Pitney Bowes Inc.  
 Planet Partnership™



**Job Title**

Dean of Business & Technology  
Board, LM-A&WMA  
Student  
HR Director  
COO  
Director  
Director, Management Projects  
Senior Environmental Scientist  
Quantitative Agricultural Economics Student  
Product and Development Manager, Environment  
Senior Vice President  
Senior Vice President  
Partner  
President  
Director of Purchasing  
Director of Agriculture  
Marketing Communications Manager  
Marketing Communications Consultant  
Founder  
VP Strategy & Market Development  
President & CEO  
EVP, Business Development  
Research Director  
Manager of Multiplatform Sponsorship Sales  
Director, Corp. Comms.

Executive Director  
President/CEO  
Consultant  
Sr. VP of Government Affairs and Compliance  
Director, Compliance & Ethics Advisory Services  
Chairman and CEO  
VP Marketing  
VP, Portfolio Strategy  
Director Packaging Innovation  
President  
VP of Strategic Innovation Initiatives  
Publisher  
Partner  
Chair  
Consultant  
Manager, Global Strategy & Programs  
Vice President, Public & Investor Relations  
President  
President  
Director of Marketing  
CR Project Leader  
Corporate Social Responsibility  
Chief Executive Officer  
Principal  
President  
VP, Corporate Citizenship  
VP, General Counsel  
Senior Corporate Counsel  
Corporate Counsel  
Director  
Partner

**Company**

Prairie State College  
Precoat Metals  
Presidio School of Management  
PRICE Systems, LLC  
PRICE Systems, LLC  
Project Homeless Connect  
PSEG Power  
Puget Sound Energy  
Purdue University  
QMI  
RBC Dain  
RBC Dain  
Re:Vision Conscious Impact  
Recognition Management Institute  
Red Gold  
Red Gold, Inc.  
Reed Evans Productions  
Reed Evans Productions  
Reputation Dynamics  
Rideau Inc.  
Rideau Recognition Solutions Inc.  
Rideau Recognition Solutions Inc.  
Risk Metrics  
RNN-TV Regional News Network  
Roche  
Rockefeller & Co., Inc.  
Rosalind Franklin Society  
Rose Consulting Service, Inc  
Rose Consulting Service, Inc  
Safeway  
SAI Global  
salesforce.com  
SAP  
SAP Labs, LLC  
Sara Lee Corp.  
Scenic Hudson  
Schawk Inc.  
Scientific American  
Sedgwick Detert Moran & Arnold  
Seneca College  
Shepherd Advisors  
SHRM  
Sierra Health Services, Inc.  
Sirota Survey  
Sirota Survey Intelligence  
Sirota Survey Intelligence  
Sirota Survey Intelligence  
Sirota Survey Intelligence  
Sirota Survey Intelligence  
Skiba Consulting, LTD.  
Social Sustainability International  
Sodexo  
Software Impressions, LLC  
Solar Turbines/ CAT  
Solar Turbines/ CAT  
Solomon Page  
Sonnenschein Nath & Rosenthal LLP



**Job Title**

**Company**

Manager	Sony
President	Sphinx Enterprises Ltd
Business Sustainability Adoption	Sphinx Enterprises Ltd
Director	Sphinx Enterprises, LTD
Founder and Chairman	Springbok Services, Inc, SRI World Group/OneReport SSRC
Community Affairs Coordinator	Starwood Hotels & Resorts Worldwide, Inc.
Manager, Ethics & Compliance	Starwood Hotels & Resorts, Inc.
Dean	Stern School of Business / NYU
President and CEO	Strategies, LLC
Corporate Social Responsibility Program Manager	Sun Microsystems
Consultant	Sun Microsystems
Vice President	Supply-Chain Services, Inc. (SSI)
President	Supply-Chain Services, Inc. (SSI)
EHS Manager	Supply-Chain Services, Inc. (SSI)
Accounting Manager	Supply-Chain Services, Inc. (SSI)
President	Sustainability Associates
Board, LM-A&WMA	Sustainability Technology Center, Univ of Illinois
Author-Triple Bottom Line	Sustainable Business Strategies
Founding Principle	SustainBiz
Genius	SustainPro
Director, Corp. Responsibility	Symantec
Manager, Sales & Business Development	TCC Group
Emissions Reduction Project Manager	TerraPass
Director of Carbon Policy	TerraPass
EVP, Development	TerraPass
Director of Development, Corporate Relations	The Ad Council
Senior Fellow, Corporate Programs	The Ad Council
Senior Partner	The Aspen Institute Business & Society Program
Director, Corporate Responsibility Communication	The Clark Group
CEO	The Clorox Company
Sr. Manager, Public Affairs	The CSR Group
Senior VP	The Dow Chemical Company
Vice President	The Kyoto Planet Group
Group Executive and Associate General Counsel	The Travelers Companies, Inc.
Sustainability Manager	Thomson Financial
Director, Employer Relations	Thunderbird
Chief CSR Officer	Thunderbird School of Global Management
VP	Tiffany & Co
Consultant	Topaz Partners for Fairchild
Manager	Toshiba America Information Systems, Inc.
Managing Director	TradeCard
Sponsor Guest	U.N. Decade for Education in Sustainable Development
Vice President, Communications	U.S. Chamber Business Civic Leadership Center
Director, Community Affairs	UBS Global Asset Management
Account Manager	Unisource Link
Account Manager	United Technologies Corp.
Vice President, Marketing	United Technologies Corp.
	United Way of New York City
	United Way of New York City
	Universal Forest Products, Inc.



**Job Title**

Student  
MBA student  
Senior Vice President  
VP, Membership  
VP, Labor Affairs & CSR  
Professor  
Executive Director, Public Policy and Corporate Responsibility

Vice President, Information Technology  
Product and Client Service Manager  
CEO  
Founder and CEO

KP Sustainability Advisor  
SVP Public Relations  
National Sales Manager Commercial Properties  
President  
Director of Engineering Support & Sustainability  
vice president  
Director, Sustainability  
Executive Director  
Business Consultant  
Sr Advisor to the Chairman  
President  
Vice President  
Chairman & Founder  
President

**Company**

University of Cambridge  
University of Chicago  
URS Corporation  
USCIB  
USCIB  
UW Madison  
Verizon Communications  
Viacom  
Viridian Advisors  
Visible Strategies  
Visible Strategies  
Visible Strategies Software  
VolunteerMatch  
Wallace Partners NGO  
Washington Mutual  
WeatherTRAK  
Weichel & Associates  
Wells Dairy Inc  
Wells Fargo  
Wilsonart International  
WNSF (Women's Network for a Sustainable Future)  
Working Intentionally  
World Economic Forum USA  
World Mundial  
XPrize Foundation  
XPrize Foundation  
Zephyr Electric